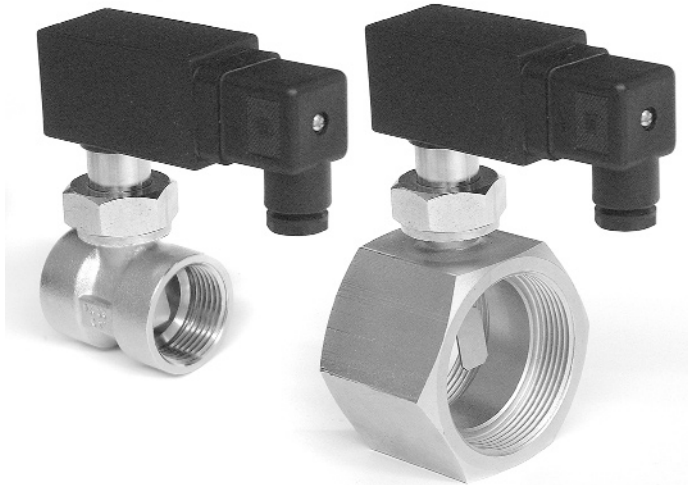


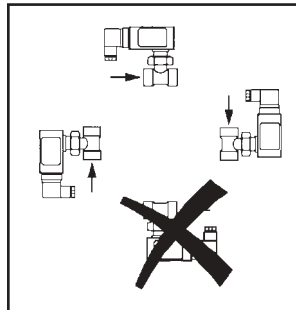
## Flow Switch



### Applications

- Oil, Gas/Air
- Coolant monitoring
- Pump seals
- Chilled water
- Compressed air delivery
- Lube oil systems

### Mounting Position



Installation position may influence switch value.

ERDCO Paddle flow switches should be considered for applications requiring simple and economical flow monitoring. This instrument provides the ability to adjust the switch point and a snap action micro switch with contacts rated 5 amperes at 125 VAC. The electrical housing is completely isolated from the flow stream without bellows or any mechanical linkages.

Available for installation in 3/8" through 2" pipe sizes with integral female threaded housing.

### Features

- Compact size.
- Magnetic switch actuation for positive isolation from the flow stream.
- Use in the horizontal or vertical piping systems.
- Design resists particulate and scale.
- High switch contact ratings.
- Repeatable switch settings.
- Low pressure loss.
- Externally adjustable switch point.
- Screw terminals with plug connector for convenient wiring.

### Principle of Operation

The Paddle series of switches are operated by the force of the flowing medium against a small rectangular target. The target is located at one end of a balance arm. The other end of the balance arm is spring loaded with a magnet attached. Inside of the electrical housing is a micro switch with a magnet attached to its actuator arm. The opposing forces of the two magnets cause switch actuation depending on the target position. Switch point may be adjusted within a 3:1 range via an externally accessible calibration port. The micro switch is single pole, double throw so it may be configured for normally open or normally closed operation.

### Specifications

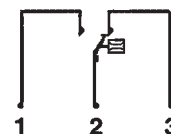
<b>Repeatability:</b>	± 1% of Maximum
<b>Pressure Limit:</b>	362 psig (25 barg)
<b>Media Temperature Limit:</b>	230°F (110°C)
<b>Typical Pressure Loss:</b>	0.2 psi (0.01 bar)

#### Materials of Construction:

Body/Housing:	Brass, nickel plated
Target:	Stainless steel
Spring:	Stainless steel
O-ring:	Buna-n

<b>Switch/Type:</b>	Micro switch
<b>Contact Rating:</b>	5 A @ 125 VAC 3 A @ 250 VAC

Adjustment Limit:	See Technical Data
Enclosure Rating:	NEMA - 4
Connection Diagram:	

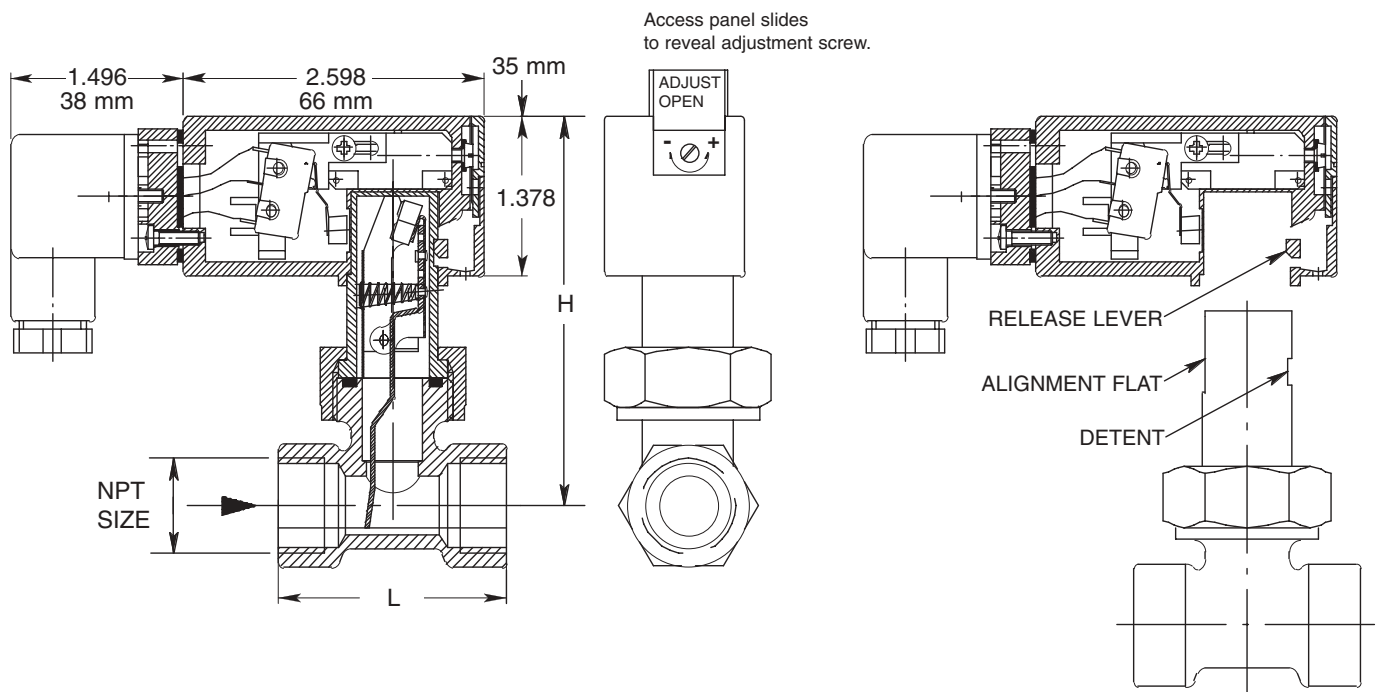


### Technical Data

Connection	Model Number	Max <sup>1</sup> GPM (l/min)	Adjustable Range <sup>1</sup> GPM water (l/min)	H inch (mm)	L inch (mm)	Weight lbs. (kg)
3/8" NPT	FS-15596-010GM050	2.6 (10)	0.9 - 1.3 (3.5 - 5)	3.43 (87)	1.97 (50)	0.8 (0.35)
1/2" NPT	FS-15596-015GM065	5.3 (20)	1.3 - 1.7 (5 - 6.5)	3.43 (87)	1.97 (50)	0.8 (0.35)
3/4" NPT	FS-15596-020GM095	10.6 (40)	1.7 - 2.5 (7 - 9.5)	3.47 (88)	1.97 (50)	0.8 (0.35)
1" NPT	FS-15596-025GM165	15.9 (60)	3.4 - 4.4 (13 - 16.5)	3.62 (92)	1.97 (50)	0.9 (0.40)
1 1/2" NPT	FS-15596-040GM460	26.4 (100)	9.2 - 12.2 (35 - 46)	3.90 (99)	2.76 (70)	1.3 (0.60)
2" NPT	FS-15596-050GM760	39.6 (150)	16.6 - 20 (63 - 76)	4.25 (108)	2.76 (70)	2.2 (1.00)

<sup>1</sup> The Paddle switch may also be used in air applications. The relationship between water and air at standard conditions is 15:1. One gallon of water has an air equivalent of approximately 2 scfm.

### Dimensional Cross-Section



Electrical connections are isolated from wetted housings. The electrical enclosure may be removed while the flow stream is active.