



OpExl Series Eccentric Plug Valve

Compact, rugged, economical, featuring excellent process control characteristics

Optimux proudly introduces a new family of control valves. Our OpExl series, an eccentric plug control valve developed as a compact, simpler and more economic alternative to our already successful line of eccentric plug control valves, the OpExc series.

FEATURES & ADVANTAGES

HIGH RELIABILITY

- The series OpExl series has been designed to attend differential pressures up to 725 psi (50 Bar), and operating temperatures between -150° F and 752° F (-100° C and 400° C). Sizes 1" to 4" in ANSI class 150/300, flanged, and in carbon steel, or stainless steel.

RANGEABILITY

- Its main characteristic, an eccentric plug capable of offering rangeability superior to 160:1, which together with two options of reduced internals offers control engineers a broad choice of Cv values for each valve diameter.

HIGH FLOW Cv

- As with the OpExc series, our robust, not-through stem allows for higher flows, simpler maintenance, and longer durability. Our stems and plugs are manufactured with 17-4 Ph as our standard.

SPRING CYLINDER ROTARY ACTUATOR

- To further enhance the excellent design characteristics of the OpExl series, we fit them with our field proven spring cylinder rotary actuator: OpTk in sizes 25 & 50, which combines robustness of pneumatic equipment with excellent throttling capabilities.

DIGITAL POSITIONER TECHNOLOGY

- The OpExl series has been designed to provide the industrial plant with a compact, more economical eccentric plug valve without sacrificing process control accuracy and responsiveness. In addition, our complete line of digital positioners from Yamatake Corp. provide state-of-the-art digital functionality and auto-calibration. Optimux offers HART® communications Yamatake positioners as a standard with the OpExl series, making this family of eccentric plug control valves the most valued offer in the market today.

FOR ADDITIONAL INFORMATION

International & North America Sales & Support

OPTIMUX CONTROLS

3884 NW 124th Ave.

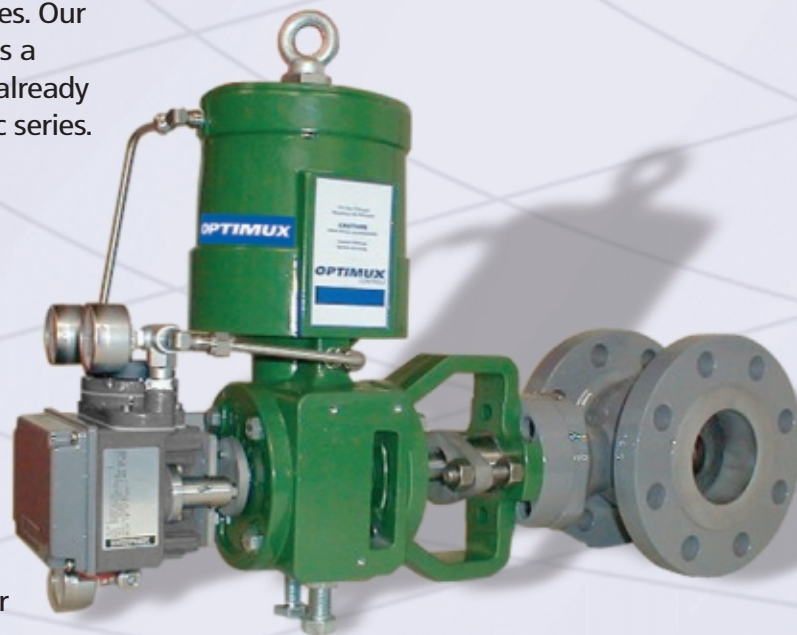
Coral Springs, Florida 33065

• ph – 954-227-8353

• fx – 954-227-8253

• em – info@optimuxcontrols.com

Or contact your nearest OPTIMUX distributor (listed in the reverse of this flyer)



ARGENTINA

Honeywell SAIC
 Attn: Hector Pampuro
 Phones: 54-11-4383-9282
 54-11-4383-3627
 e-mail: hector.pampuro@honeywell.com

BRAZIL

Valtek Sulamericana Ltda
 Attn: Victor Henriques
 Phone: 55-11-4075-1011
 e-mail: vhenriques@valtek.com.br
 web site: www.valtek.com.br

CHILE

Trumatic S.A.
 Attn: Elizabeth Jones
 Phone: 56-2-248-2929
 e-mail: erwin.ciesla@trumatic.cl

COLOMBIA

Equipos y Controles Industriales S.A.
 Attn: Pedro Jidy
 Phone: 57-1-327-5151/5152
 e-mail: castillf@eci.com.co

COSTA RICA

Capris S.A.
 Attn: Mauricio Rojas
 Phone: 506-290-0102 x 206
 e-mail: mauricio.rojas@capriseng.com

ECUADOR

ETECO C.A.
 Attn: Richard Zeller
 Phone: 593-2-2-268-600
 e-mail: lochoa@eteco-ec.com

EL SALVADOR

Materiales Tecnicos, S. A. de C. V.
 Attn: Mario Cardoza / Rene Portillo
 Phone: 503-235-2678
 e-mail: portillo-matesa@salnet.net

PERÚ

Controlmatic S.A.C
 Attn: Maurice J. Claux
 Phone: 511-442-0199/0295/0890
 e-mail: maurice.claux@controlmatic.com
 web site: www.controlmatic.com

VENEZUELA

Suplidora Instrumatik C.A.
 Attn: Giorgio Ghini
 Phone: 58-241-832-7311
 e-mail: giorgioghini@telcel.net.ve
 web site: www.supinsca.com

AUSTRALIA

Flow Design
 Attn: Karst Kreun
 Phone: 61-39886-0912
 e-mail: flowdesign@optusnet.com.au

DENMARK

Moller & Lyngholm Proces Teknik Aps.
 Attn: Tommy Moller
 Phone: 45-5752-5810
 e-mail: valves@mail.dk

INDONESIA

Matco Asia Indonesia
 Attn: Irjanto Djaja
 Phone: 62-21-722-4376
 e-mail: jakmatco@rad.net.id

MALAYSIA

Matco Malaysia Sdn. Bhd.
 Attn: Ramesh Rajendran
 Phone: 603-4256-2975
 e-mail: matco@po.jaring.my

MEXICO

Industrias Controlpro S.A. de C.V.
 Attn: Ing. Jorge Rivera Garza
 Phone: 5281-8373-3900
 Cell: 5281-8309-2881
 e-mail: jriverag@prodigy.net.mx

PAKISTAN

Control Systems Engineering
 Attn: Hasan Akhtar Kazmi
 Phone: 92-42-5830405, 5836506, 5861269 – 70
 Mobile: 0300-8470499
 e-mail: hkazmi@sat.net.pk, cse@cyber.net.pk

SINGAPORE

Matco Asia Pte. Ltd.
 Attn: Dennis H. Shoff
 Phone: 65-6262-0359
 e-mail: DennisShoff@matcoasia.com.sg

THAILAND

Matco Asia (Thailand) Ltd.
 Attn: Phil Hughes
 Phone: 662-318-5640
 e-mail: phughes@matcoasia.com

CANADA

Superior Controls Inc.
 Attn: David Komonoski
 Phone: 403-236-2600
 e-mail: dave@sciwest.ca

USA

Agren-Ascher Co., Inc.
 St. Claire Shores, Michigan 48080
 Attn: Charles E. Wolfe
 Phone: 586-773-2220

Alpha Controls, Inc.
 Cincinnati, Ohio 45240
 Attn: Mike Maloney & Stan Kephart
 Phone: 513-874-2000
 e-mail: mikemaloney@msn.com

Alpha Valve & Controls, Inc.
 Tampa, Florida 33613
 Attn: Jeff Smith
 Phone: 813-265-4300
 e-mail: Jeff@Alpha-Controls.com
 web site: www.alpha-controls.com

CV Sales, Inc.
 Clarence, New York 14031-1808
 Attn: Peter Todenhagen
 Phone: 716-633-1423

Engineering Performance
 Phoenix, Arizona 85009
 Attn: Octavio Terrazas
 Phone: 602-353-1699
 e-mail: ott@engsperf.com
 web site: www.engperf.com

Escotech
 San Juan, Puerto Rico 00911
 Attn: Paul Escobar
 Phone: 787-728-0552
 e-mail: pesco@wns.net
 web site: www.escotechinc.com

F. S. Welsford Company
 Exton, Pennsylvania 19341-2617
 Attn: Fred Welsford
 Phone: 610-524-9600
 e-mail: fwelsford@fswelsford.com
 web site: www.fswelsford.com

F.S. Welsford Company
 Parsippany, New Jersey 07054
 Attn: Mark Trainer
 Phone: 973-334-6686
 Toll: 800-638-9229
 e-mail: mtrainer@fswelsford.com

Green Controls, Inc.
 Jacksonville, Arkansas 72076-3112
 Attn: Bob Green
 Phone: 501-982-0937

Industrial Specialties Co. of LA, Inc.
 Baton Rouge, Louisiana 70884-2679
 Attn: Ed Jones and Kelwin D. Clark
 Phone: 225-751-9600
 800-345-5919
 e-mail: ed@industrialspecialties.com

Lilly Engineering Co., Inc.
 Itasca, Illinois 60143
 Attn: Neal Lilly
 Phone: 630-773-2222
 web site: www.lillyengineering.com

Marine Specialty
 Mobile, Alabama 36603
 Attn: S. L. Box
 Phone: 251-432-0581
 e-mail: sbox@marspec.com

Marine Specialty
 Columbus, Mississippi 39702
 Attn: Wes McCullough
 Phone: 662-251-9581
 e-mail: marine@ebicom.net

Marine Specialty
 Mobile, Alabama 36633
 Attn: Wayne Hoggle
 Phone: 205-678-0145
 e-mail: marinewh@earthlink.net

Matco Asia-USA, LLC
 Haiku, Hawaii 96708
 Attn: Patrick K. Mullen
 Phone: 808-575-2422
 e-mail: pmullen@matcoasia.com

Power Process Equipment, Inc.
 Chanhassen, Minnesota 55317
 Attn: Dave Cookson
 Phone: 952-937-1000
 e-mail: davec@ppep-mn.com

Process Specialties, Inc.
 Denver, Colorado 80216
 Attn: Cy Cajthaml
 Phone: 303-789-4449 / 800-238-7400
 e-mail: cy@psidenver.com

Process Specialties, Inc.
 Sandy, Utah 84070
 Attn: Ron Wilson
 Cell: 801-597-4748
 Home: 801-426-6510
 e-mail: rw2372@cs.com

Rencor Controls, Inc.
 Fort Edward, New York 12828
 Attn: Patrick F. Herlihy
 Phone: 518-747-4174 / 800-777-4174
 e-mail: pat@rencor.com

Rencor Controls, Inc.
 Litchfield, MA 04350
 Attn: Dan O'Leary
 Phone: 207-582-8190
 e-mail: dano@rencor.com

Valves & Industrial Resources
 Houston, Texas 77048
 Attn: Garry Salisbury / David Stubbs
 Phone: 713-991-3700
 e-mail: david@controlvalvesplus.com
 e-mail: valves1@email.msn.com
 web site: www.controlvalvesplus.com

W.K. Hile Corporation
 Matthews, NC 28106-1015
 Attn: Kirk Hile
 Phone: 704-847-9125
 e-mail: sales@wkhile.com
 web site: URL:http://wkhile.com