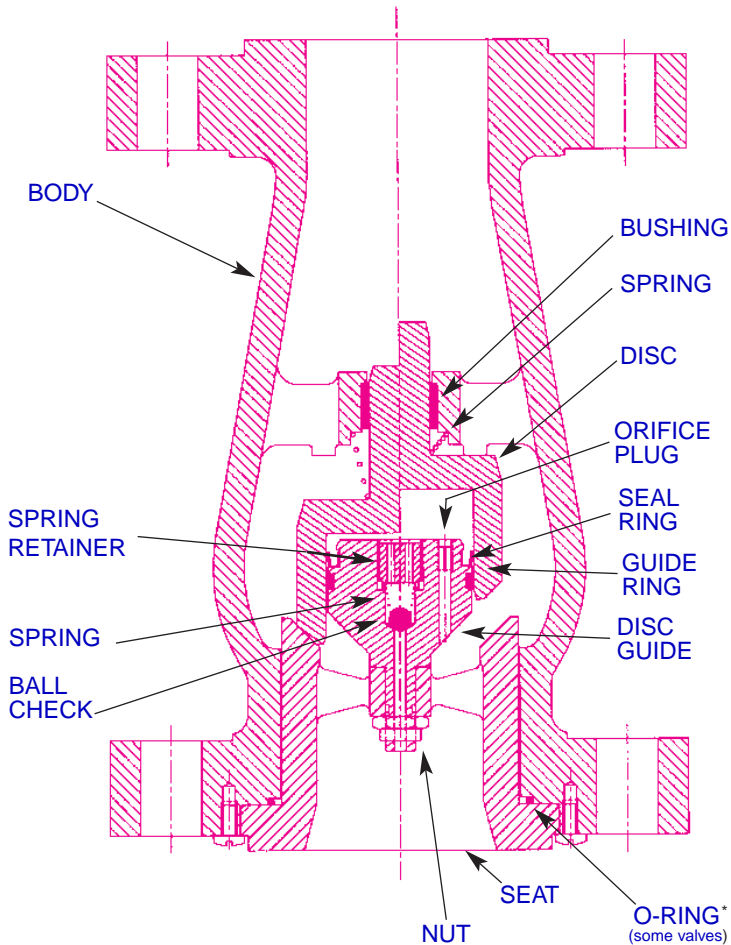


## Features:



US Patent #4,766,929 #4,693,270

- **Pulse damped design**
- Modulating “air” or “gas” applications:
  - discharge of reciprocating air/gas compressors
  - self sizing - accommodates varying flows without chattering
- Mediums:
  - air
  - gas
- ANSI **Face-to-Face** dimensions
- One piece body
- Spring-assisted silent closing
- 2” to 12” Line size
- ANSI 150 to 1500
- WCB, 316 SS & LCC body
- 316 SS trim
- 316 SS spring (450°F max)
- Ends:
  - RF Flanged
  - RTJ
- Center guided
- Horizontal or vertical installation
- Tight shut-off
- Protected spring
- Easy maintenance
- Versatile
- **OPTIONS:**
  - Soft seat
  - Inconel<sup>®</sup> X-750 Spring (500°F max due to nonmetallic components)
  - Monel trim

The DFT<sup>®</sup> Model PDC Silent Check Valve is specially designed for use on the discharge side of reciprocating air or gas compressors. It includes a pulse damping chamber to maintain the disc in the open position during the momentary reductions in flow associated with each cycle of a reciprocating compressor and to protect against premature seat wear.

\*Consult Page 17 for valves with Body “O” ring seals.

Consult page 25 for Pressure/Temperature ratings and page 26 for materials of construction.

## Class 150 RF

|        | 2" | 3"                            | 4"                             | 6"  | 8"*                            | 10"*                           | 12"                            |
|--------|----|-------------------------------|--------------------------------|-----|--------------------------------|--------------------------------|--------------------------------|
| A      | 8  | 9 <sup>1</sup> / <sub>2</sub> | 11 <sup>1</sup> / <sub>2</sub> | 14  | 19 <sup>1</sup> / <sub>2</sub> | 24 <sup>1</sup> / <sub>2</sub> | 27 <sup>1</sup> / <sub>2</sub> |
| B      | 6  | 7 <sup>1</sup> / <sub>2</sub> | 9                              | 11  | 13 <sup>1</sup> / <sub>2</sub> | 16                             | 19                             |
| Weight | 20 | 40                            | 64                             | 94  | 158                            | 317                            | 445                            |
| CV     | 62 | 148                           | 255                            | 660 | 1005                           | 1580                           | 2300                           |

## Class 300 RF

|        | 2"                             | 3"                             | 4"  | 6"                             | 8"*  | 10"*                           | 12"                            |
|--------|--------------------------------|--------------------------------|-----|--------------------------------|------|--------------------------------|--------------------------------|
| A      | 10 <sup>1</sup> / <sub>2</sub> | 12 <sup>1</sup> / <sub>2</sub> | 14  | 17 <sup>1</sup> / <sub>2</sub> | 21   | 24 <sup>1</sup> / <sub>2</sub> | 28                             |
| B      | 6 <sup>1</sup> / <sub>2</sub>  | 8 <sup>1</sup> / <sub>4</sub>  | 10  | 12 <sup>1</sup> / <sub>2</sub> | 15   | 17 <sup>1</sup> / <sub>2</sub> | 20 <sup>1</sup> / <sub>2</sub> |
| Weight | 27                             | 50                             | 82  | 149                            | 293  | 452                            | 673                            |
| CV     | 62                             | 148                            | 255 | 660                            | 1005 | 1580                           | 2300                           |

## Class 600 RF

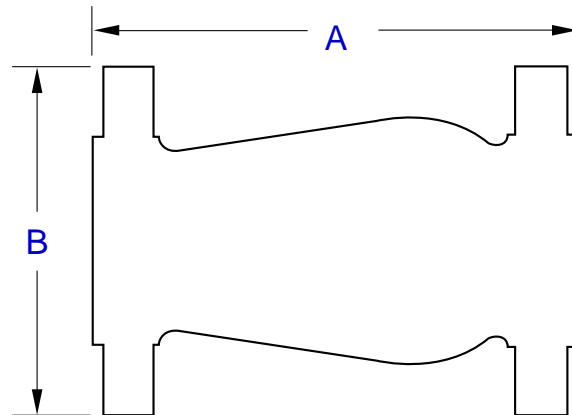
|        | 2"*                            | 3"*                           | 4"*                            | 6"* | 8"*                            |
|--------|--------------------------------|-------------------------------|--------------------------------|-----|--------------------------------|
| A      | 11 <sup>1</sup> / <sub>2</sub> | 14                            | 17                             | 22  | 26                             |
| B      | 6 <sup>1</sup> / <sub>2</sub>  | 8 <sup>1</sup> / <sub>4</sub> | 10 <sup>3</sup> / <sub>4</sub> | 14  | 16 <sup>1</sup> / <sub>2</sub> |
| Weight | 35                             | 58                            | 117                            | 272 | 450                            |
| CV     | 62                             | 142                           | 255                            | 660 | 1005                           |

## Class 900 RF

|        | 2"*                            | 3"*                           | 4"*                            | 6"* |
|--------|--------------------------------|-------------------------------|--------------------------------|-----|
| A      | 14 <sup>1</sup> / <sub>2</sub> | 15                            | 18                             | 24  |
| B      | 8 <sup>1</sup> / <sub>2</sub>  | 9 <sup>1</sup> / <sub>2</sub> | 11 <sup>1</sup> / <sub>2</sub> | 15  |
| Weight | 65                             | 84                            | 144                            | 322 |
| CV     | 55                             | 118                           | 224                            | 567 |

## Class 1500 RF

|        | 2"*                            | 3"*                            |
|--------|--------------------------------|--------------------------------|
| A      | 14 <sup>1</sup> / <sub>2</sub> | 18 <sup>1</sup> / <sub>2</sub> |
| B      | 8 <sup>1</sup> / <sub>2</sub>  | 10 <sup>1</sup> / <sub>2</sub> |
| Weight | 65                             | 171                            |
| CV     | 55                             | 118                            |



Note:

- All dimensions are in inches. Weights are in pounds.
- Maximum operating temperature is 450°F with the 316 SS spring. 500°F with the Inconel<sup>®</sup> X-750 spring due to nonmetallic components.

\*Buna-N (-70 to 250°F) body "O" ring seal. Contact DFT<sup>®</sup> for other materials.