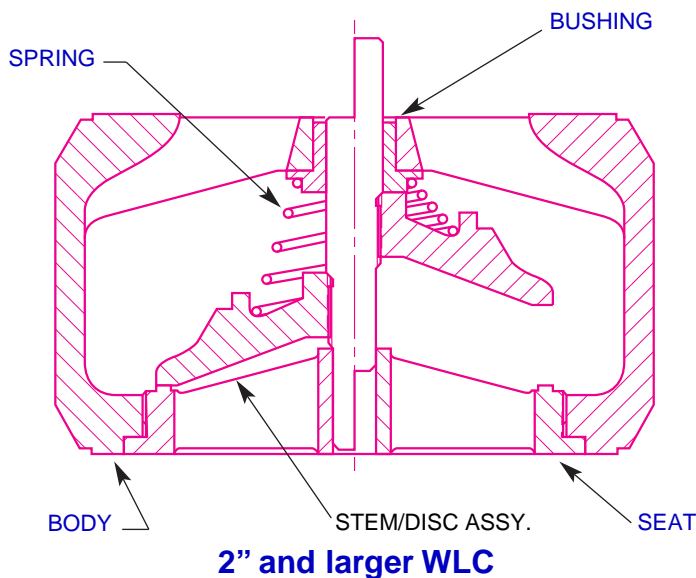
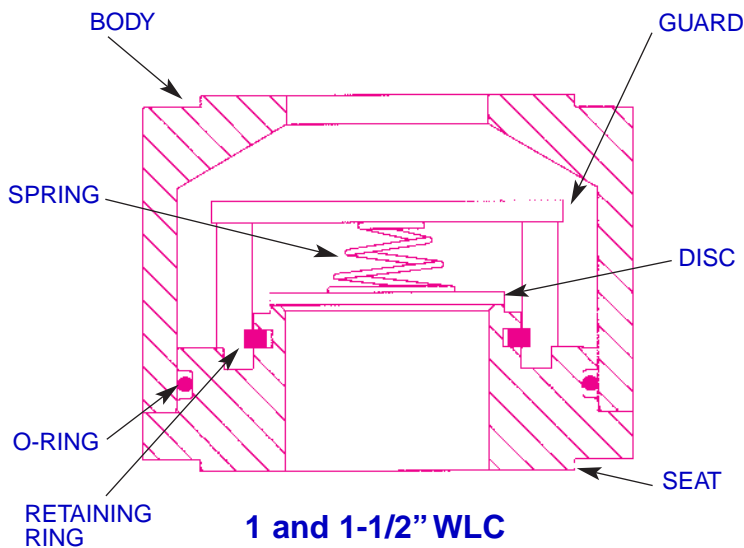


WLC®



Features:

- Wafer design
- Lightweight
- Spring-assisted silent closing
- Body guided (1" & 1-1/2")
- Center guided (2" to 10")
- Dual guided stem (2" to 10")
- Horizontal or vertical installation
- Protected spring
- **ANSI 150 to 2500**
 - 1" to 10" Line Size
 - WCB & 316 SS bodies
 - 316 SS trim
 - Ends:
 - Wafer RF
 - Wafer RTJ
 - MSS-SP 61 seat leakage
 - API 594 Face-to-Face dimension:
 - Class 600 RF
 - Class 900/1500 RF
- **OPTIONS:**
 - Inconel® X-750 Spring
 - Soft Seat
 - Custom Sizing
 - Body Materials:
 - Alloy20, Inconel® 625, Titanium
 - Stellite trim (600°F+)
- **ANSI 125 & 250**
 - 2" to 10" Line Size
 - Cast Iron body
 - Bronze or 316 SS trim
 - Ends:
 - Wafer FF
 - AWWA seat leakage
 - FM approval:
 - 2" to 10" Cl. 125 w/Bronze trim
- **OPTIONS:**
 - Soft seat

The DFT® Model WLC Wafer style Silent Check Valve is a lightweight, spring-assisted, center guided, in-line check valve that provides reliable, low maintenance service for a wide range of fluids and pressure/temperature combinations. The joint between the seat ring and body is sealed by the flange gasket upon installation preventing any leakage through the joint when the valve is in service.

Consult page 25 for Pressure/Temperature ratings and page 26 for materials of construction.

Class 150 RF⁽¹⁾

	1"*	1 1/2"*
A	2	2 1/2
B	2 5/8	3 1/4
Weight	2	4
CV	19	36

Class 300 RF⁽¹⁾

	1"*	1 1/2"*
A	2	2 1/2
B	2 7/8	3 3/4
Weight	3	6
CV	13	36

Class 150/300 RF

	2"*	2 1/2"*	3"*	4"*	5"*	6"*	8"*
A	2 5/8	2 7/8	3 1/8	4	4 5/8	5 1/2	6 1/2
B	4 3/8	5 1/8	5 3/4	7 1/8	8 1/2	9 7/8	12 1/8
Weight	4	10	12	20	35	41	86
CV	57	95	140	265	360	506	860

150 RF

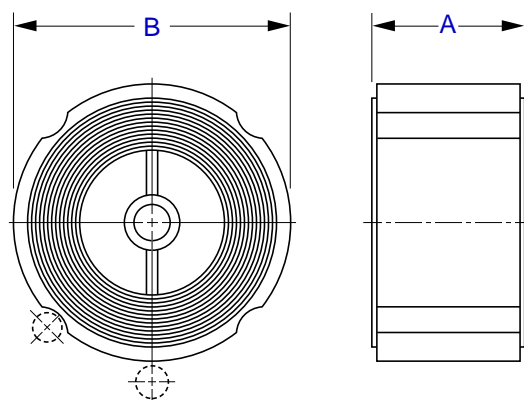
	10"*
A	8 1/4
B	17 5/8
Weight	138
CV	1355

Class 600 RF⁽¹⁾

	1"	1 1/2"	2"	3"	4"	6"
A	2 3/8	2 7/8	2 3/8	2 7/8	3 1/8	5 3/8
B	2 7/8	3 3/4	4 1/4	5 3/4	7 1/2	10 3/8
Weight	2 1/2	8	5	11	21	68
CV	19	23	53	133	234	441

Class 900/1500 RF⁽¹⁾

	1"	1 1/2"	2"	3"	4"	6"
A	2 3/8	2 7/8	2 3/4	3 1/4	4	6 1/4
B	3 1/8	3 7/8	5 1/2	6 3/4	8 1/8	11 1/4
Weight	4	8	14	21	38	100
CV	19	23	48	113	211	370



Dual Pressure Service: Class 125/250 for 2" to 6"
Class 150/300 for 2" to 8", Class 900/1500 for 1" to 6"

Class 1500 RTJ⁽²⁾

	1"	1 1/2"	2"*	2 1/2"*	3"	4"*	6"	10"
A	2 3/8	2 7/8	3 1/8	3 5/8	3 1/4	4 1/8	6 1/4	9 3/4
B	3 1/8	3 7/8	5 1/2	6 1/2	6 3/4	8 1/4	11 1/4	17 1/16
Weight	4	7	14	18	21	38	100	430
CV	19	23	48	70	113	211	370	755

1500 RF⁽²⁾ 2500 RTJ⁽²⁾

	10"	1"	2"*	3"
A	9 3/4	2 3/8	2 13/16	3 3/8
B	17	3 1/8	5 3/4	7 1/2
Weight	430	4.1	17	33
CV	755	19	35	80

Class 125/250 Cast Iron FF

	2"*	2 1/2"*	3"*	4"*	5"*	6"*
A	2 5/8	2 7/8	3 1/8	4	4 3/4	5 1/2
B	4 1/4	5	5 3/4	7	8 3/8	9 3/4
Weight	6	7	12	18	27	42
CV	66	88	130	228	350	520

Class 125 Cast Iron FF

	8"*	10"*
A	6 1/2	8 1/4
B	13 3/8	16
Weight	85	129
CV	900	1450

Class 250 Cast Iron FF

	8"*	10"*
A	6 1/2	8 1/4
B	13 3/8	16
Weight	86	137
CV	900	1450

All dimensions are in inches. Weights are in pounds.
*Does not meet API 594 face-to-face dimension.

Notes: 1. Size 1" and 1-1/2" have Buna-N (-70 to 250°F) body "O" ring seals. Contact DFT for other materials.
2. All sizes have Buna-N (-70 to 250°F) body "O" ring seals except 10" C I. 1500 RTJ/RF have spiral wound body seals. Contact DFT for other materials.